

Write your name here:

Savings jar



Pick the one thing you really want to save for, then with a grown-up, write down how much you need to save. Colour in the jar as you reach the different amounts of money saved for your special savings goal.



How much do you want to save?

£

£ .

£ .

£ .

£ .

£ .

£ .

£ .

£ .

£ .

£ 0.00



Jar gynilo



Dewiswch un peth yr ydych chi eisiau cynilo ar ei gyfer, yna gydag oedolyn, ysgrifennwch faint y mae'n rhaid ichi ei gynilo. Lliwiwch y jar wrth ichi gyrraedd y gwahanol symiau o arian a gynilwyd ar gyfer eich nod arbennig.



Faint ydych chi eisiau ei gynilo?

£

£ .

£ .

£ .

£ .

£ .

£ .

£ .

£ .

£ .

£ 0.00



Word matcher



Can you help Dylan find the right meaning for each word?

Words

Money

Bank

Principality

Save

Change

Coins

Cost

Meanings

The amount of money you need to have to buy something.

If you buy something that costs less than the cash you give to the person in the shop, they will give you back the left over money.

This is the amount you have that you can use to buy things.

Where you go to pay your money into your savings account.

Metal objects we use to pay for things.

This is a place where you can keep your money. This place is not owned by the people who have accounts with them.

This is keeping your money until you want to spend it. Most people keep their money in a bank or building society.



Paru geiriau



A allwch chi helpu Dylan i ddod o hyd i'r ystyr cywir ar gyfer pob gair?

Geiriau

Arian

Banc

Principality

Cynilo

Newid

Darnau arian

Cost

Ystyron

Y swm o arian y mae'n rhaid ichi ei gael i brynu rhywbeth.

Os prynwch chi rywbeth sy'n costio llai na'r arian parod yr ydych chi'n ei roi i'r person yn y siop, fe fydd yn rhoi'r arian sy'n weddill yn ôl ichi.

Dyma'r swm sydd gennych i'w ddefnyddio i brynu pethau.

Lle yr ydych yn mynd iddo i dalu eich arian i mewn i'ch cyfrif cynilo.

Darnau metel yr ydym yn eu defnyddio i dalu am bethau.

Dyma le gallwch chi gadw eich arian. Nid yw'r bobl sydd â chyfrifon yma yn berchen ar y lle hwn.

Cadw eich arian nes y byddwch eisiau ei wario yw hyn. Mae'r rhan fwyaf o bobl yn cadw eu harian mewn banc neu gymdeithas adeiladu.



Write your name here:

What do you want to save for?



Draw or stick pictures of all the different things you would like to save for in the frame

Did you know?

that a Building Society is somewhere that looks after your money. The people in charge of the Building Society are its customers and they are called 'Members'.



Ar gyfer beth ydych chi eisiau cynilo?



Tynnwch neu gludiwch luniau o'r holl bethau gwahanol yr hoffech chi gynilo ar eu cyfer yn y ffrâm

A wyddoch chi?

fod Cymdeithas Adeiladu yn lle sy'n gofalu am eich arian. Y bobl sy'n gofalu am y Gymdeithas Adeiladu yw ei chwsmeriaid a elwir yn 'Aelodau'.

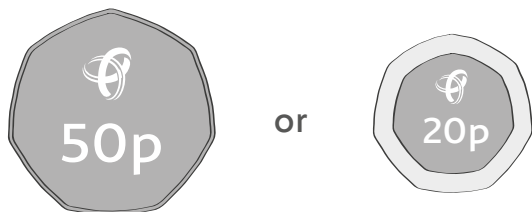


Clever coins



Please tick the box next to the coin with the highest value in each pair.
Just remember that it's not always the bigger coin that's worth more.

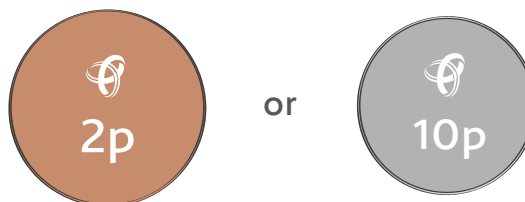
1.



2.



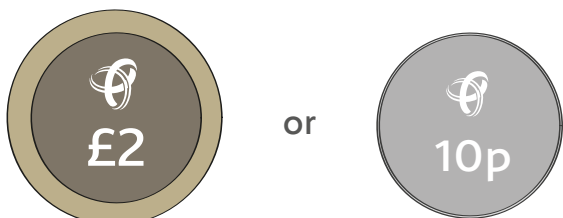
3.



4.



5.



Deall darnau arian



Ticiwch y blwch yn ymyl y darn arian â'r gwerth uchaf ym mhob pâr.
Cofiwch nad y darn arian mwyaf o faint sydd werth mwy bob tro.

1.



neu



2.



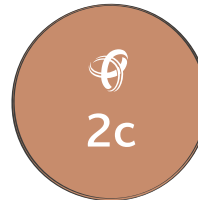
neu



Hwre,
darnau arian!



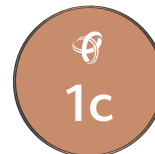
3.



neu



4.



neu



5.



neu

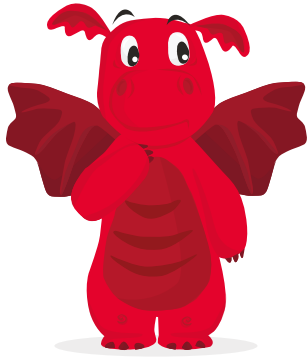


Write your name here:

Word search



Help Dylan find these hidden words that are all about money! Then ask a grown-up what they mean.



cash

pound

goal

bank

finance

money

save

coin

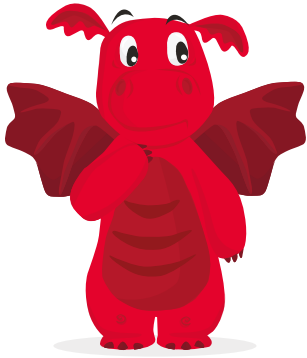


c	a	s	h	d	m	o	f
m	o	n	e	y	f	e	i
b	s	g	o	a	l	m	n
a	i	a	e	e	b	e	a
n	w	n	v	c	o	i	n
k	u	x	a	e	w	a	c
c	p	o	u	n	d	n	e

Chwilo'tair



Helpwch Dylan i ddod o hyd i'r geiriau cudd yma sydd i gyd yn ymwneud ag arian! Yna gofynnwch i oedolyn beth yw eu hystyr.



ceiniog

punt

nod

banc

cyllid

arian

cynilo

cyfrif

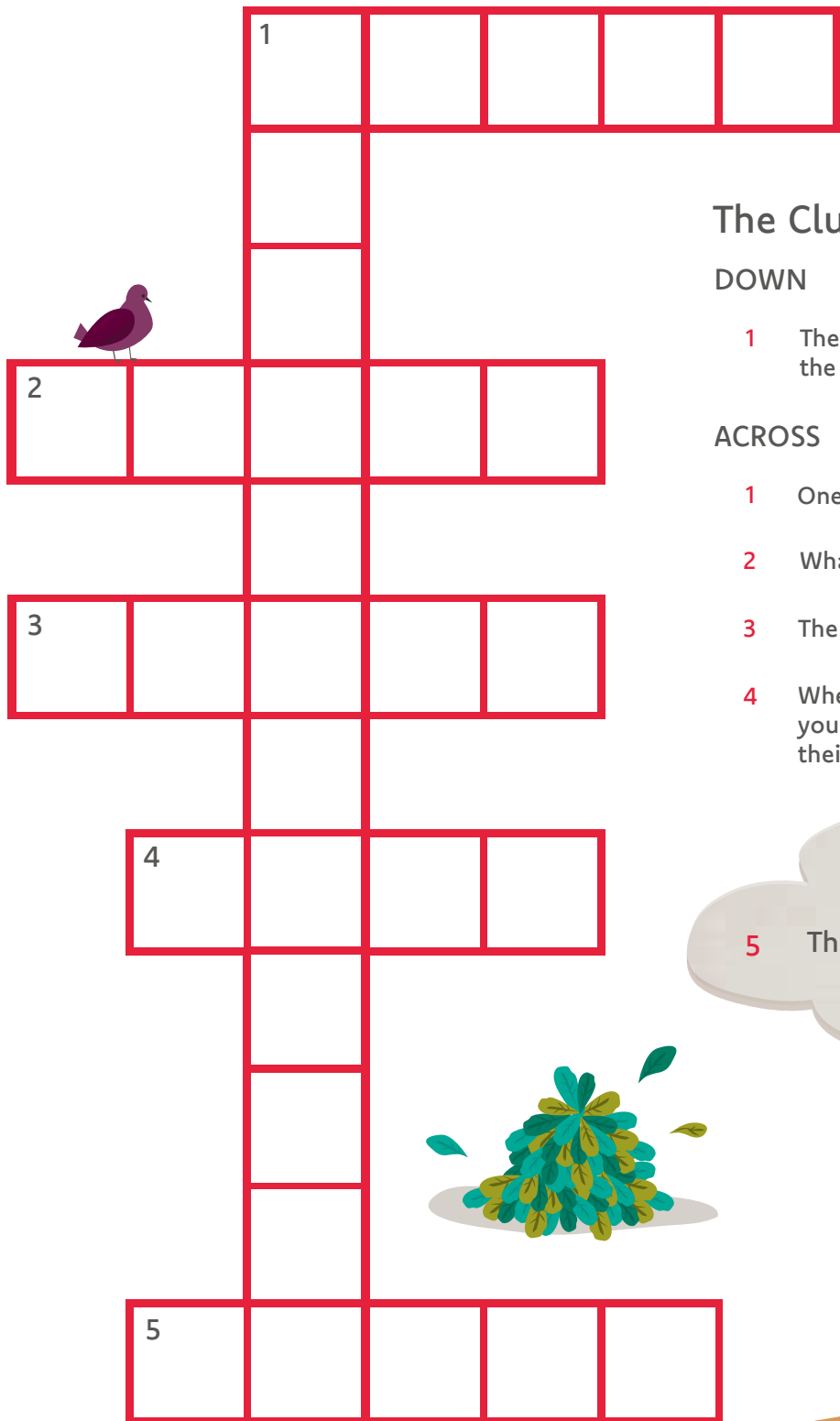


c	e	i	n	i	o	g	c
c	a	r	i	a	n	e	y
c	y	f	r	i	f	m	ll
b	i	n	e	n	b	e	i
a	w	n	i	c	o	i	d
n	u	x	a	l	w	d	c
c	p	u	n	t	o	n	e

Crossword



Complete the crossword by using the clues. If you get stuck, then ask a grown-up for help.



1

2

3

4

5

The Clues

DOWN

- 1 The first name of your building society and the name of the big stadium in Cardiff.

ACROSS

- 1 One hundred pence makes one ...
- 2 What you use to buy things.
- 3 The metal objects we use to pay for things.
- 4 Where you can keep your money until you want to spend it. Most people keep theirs in either a building society or a..

5 This is my name! I'm a Dragon!



Croesair



Cwblhewch y croesair gan ddefnyddio'r cliwiau. Os gewch chi drafferth, gofynnwch i oedolyn am gymorth.

Y Cliwiau

I LAWR

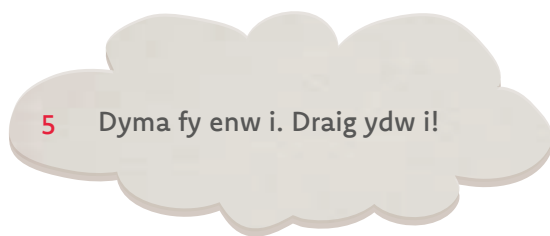
- 1 Enw cyntaf y gymdeithas adeiladu ac enw'r stadiwm mawr yng Nghaerdydd.



2				
---	--	--	--	--

AR DRAWS

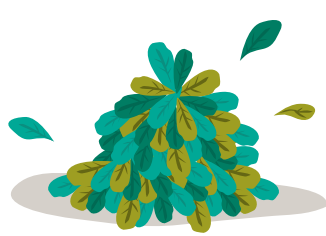
- 1 Mae can ceiniog yn gwneud ...
- 2 Yr hyn yr ydych yn ei ddefnyddio i brynu pethau.
- 3 Y pethau metel rydym ni'n ei defnyddio i dalu am bethau (----- arian)
- 4 Lle i gadw eich arian tan eich bod eisiau ei wario. Mae'r rhan fwyaf o bobl yn cadw eu harian mewn cymdeithas adeiladu neu ..



3						
---	--	--	--	--	--	--

4					
---	--	--	--	--	--

5				
---	--	--	--	--



Going shopping

Dylan has gone to the shop and has **£8.00** to spend. Write down all the things you think Dylan can buy below, but remember you can't spend over **£8.00**, so keep adding up the cost as you go.



What are you buying?	How much for each?	Total cost

How much have you spent? £

Siopa



Mae Dylan wedi mynd i'r siop ac mae ganddo **£8.00** i'w wario. Ysgrifennwch isod bopeth yr ydych chi'n credu y gall Dylan ei brynu, ond cofiwch, allwch chi ddim gwario mwy nag **£8.00**, felly cyfrifwch yr arian wrth fynd ymlaen.



Beth ydych chi'n ei brynu?

Faint am bob un?

Cyfanswm y gost

Faint ydych chi wedi ei wario?

£

What is interest?

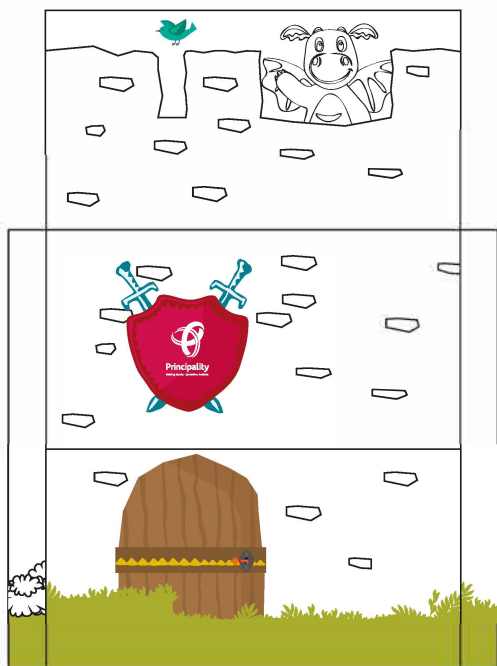


Banks and Building Societies pay you to keep your money with them. This is called interest. Let's see how keeping money in your money-box compares to keeping money in a Principality Building Society savings account.

Your Money-box

Your Money-box does not have an interest rate.

This means if you have a £20.00 at the start of the year, and you don't touch it, it will still be £20.00 at the end of the year.



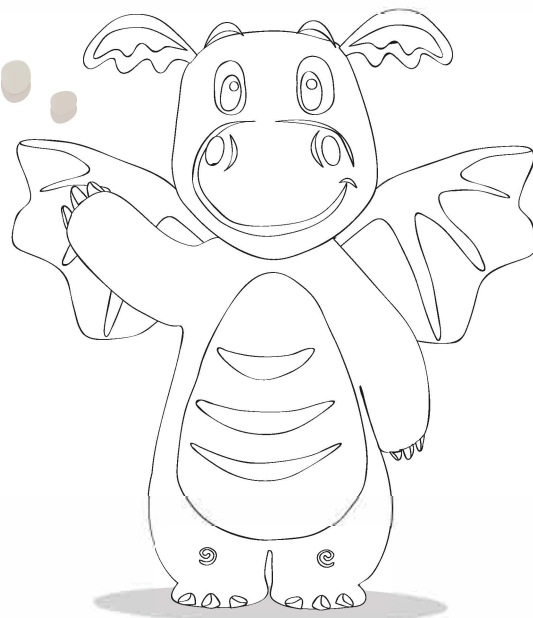
Colour in the money-box and me with your favourite colours!



Your Savings Account

Let's say you have a 4% interest rate.

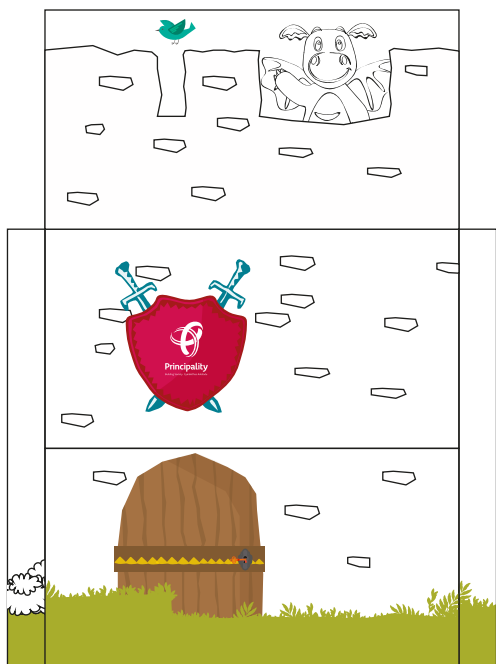
This means that if you have £20.00 at the start of the year and you don't move any money, you will earn £0.80 over the year. This means that at the end of the first year you'll have £20.80.



Beth yw llog?



Mae Banciau a Chymdeithasau Adeiladu yn eich talu chi i gadw eich arian gyda nhw. Llog yw'r enw ar hyn. Dewch i ni weld sut y mae cadw arian yn eich cadw-mi-gei yn cymharu â chadw arian mewn cyfrif cynilo gyda Cymdeithas Adeiladu'r Principality.



Eich Cadw-mi-gei

Nid oes gan eich cadw-mi-gei gyfradd llog.

Mae hyn yn golygu, os oes gennych chi £20.00 ar ddechrau'r flwyddyn ac nid ydych chi'n cyffwrdd â hynny, bydd gennych chi £20.00 ar ddiwedd y flwyddyn.

Lliwiwch y cadw-mi-gei a fi yn eich hoff liwiau!

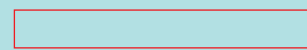


Eich Cyfrif Cynilo

Dewch inni ddweud bod gennych chi gyfradd llog o 4%.

Mae hyn yn golygu, os oes gennych chi £20.00 ar ddechrau'r flwyddyn ac nid ydych yn symud unrhyw arian, byddwch yn ennill £0.80 bob mis. Felly bydd gennych chi £20.80 ar ddiwedd y flwyddyn gyntaf.





Eich Cadw-mi-gei

Your Moneybox

